

probable that all the curves intersect at the temperature of absolute zero. At that temperature it is also possible that the specific

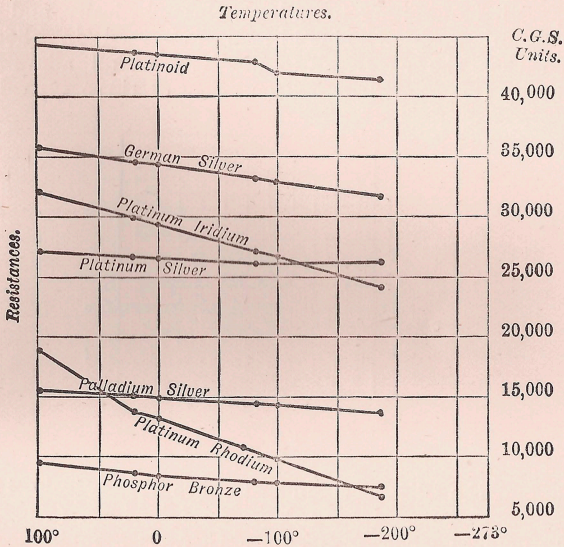


FIG. 27b.

heats themselves are zero. In any case Dulong and Petit's law does not hold good for low temperatures.

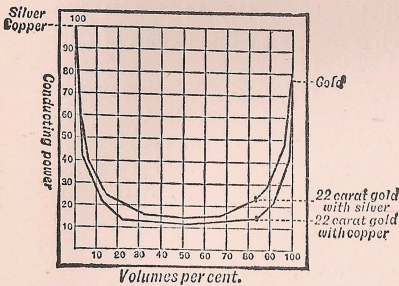


FIG. 28.

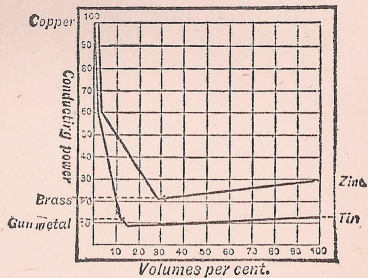


FIG. 29.

Conduction of Electricity by Solid Alloys.—In the case of solid alloys—solidified solutions of metals, that is—the nature of the evidence is very different, for the passage of the electric